



Tri-Proof Linear-Linkable Broad Line

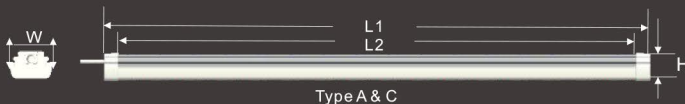
Parking Lot, Subway, Large Supermarket, Food Processing Factory, Animal & plant Farm, School & Hospital, Gas Station MTR Station, Airport, Office indoor lighting.



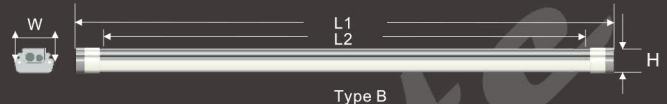
remote control



Dimension



Type A & C



Type B

ModelNo.	L1(mm)			L2(mm)			W(mm)			H(mm)		
	A	B	C	A	B	C	A	B	C	A	B	C
TP-2FT-20W	600	650	600	540			94			60		
TP-3FT-25W	900	950	900	840			94			60		
TP-4FT-36W	1200	1250	1200	1140			94			60		
TP-4FT-45W	1200	1250	1200	1140			94			60		
TP-5FT-60W	1500	1550	1500	1440			94			60		
TP-8FT-70W	2400	2450	2400	2340			94			60		

Deep Roof Lighting Inc. 55 Sea Cliff Avenue, Glen Cove, NY 11542
 ph (516) 676-9100 fx (516) 676-9109

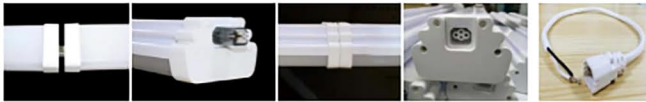
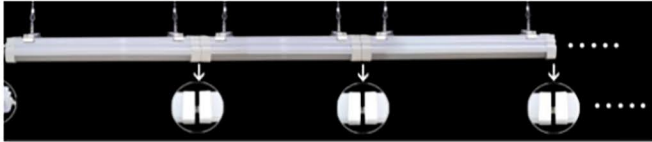
Tri-Proof Linear-Linkable Broad Line



Product Features:

- DLC, UL, cUL approved
- Perfect for retail stores, parking garages, stair cases, etc.
- Sizes: 2 feet/20 Watt, 4 Feet/36 Watt, 8 Feet/70 Watt
- Color Temp: 3000K, 3500K, 4000K, 5000K
- Up to 124 Lumen/Watt / LED Type: LM80
- Smart Sensor: Integrated Microwave & Daylight Sensor
- Non-Dimmable / Dimmable
- IP65 / Class II Driver / Power Factor: > 0.9
- Built-in Aluminum Heatsink with VO Fire-rated PC Housing
- Intelligent Emergency System
- Wide 270° Beam Angle
- Lifespan: 50,000 Hours
- LM79 Data, LM80 Reports & IES Files available
- Remote Control

--Type C (seamless connection ,not IP65)



PC9 waterproof connection



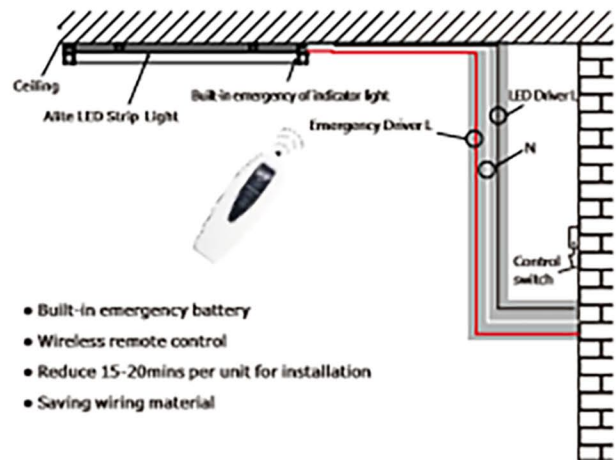
Metal hose connection(Non-Waterproof)



(PG9 connector)

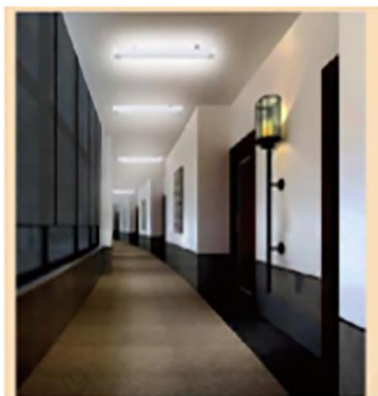


(Metal Hose)

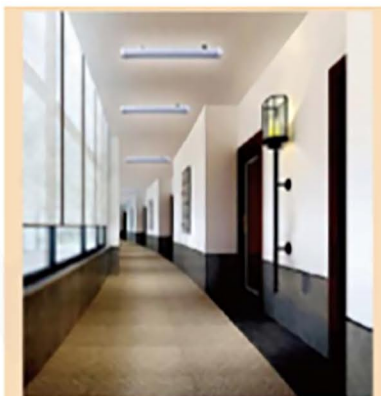


Build-in Daylight Sensor Instructions

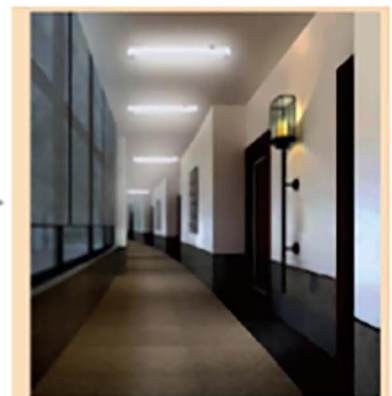
--Sensor function will be turn off when the ambient illumination above pre-set value (Factory setting is 15lux)



Turn on the Daylight sensor function, the lamp on when the ambient illumination below pre-set value.



Sensor function be turn off and the lamp off when the ambient illumination above pre-set value.



When the ambient illumination below the pre-set value, the lamp turn on when motion detected.

Item Codes:

LTP-L220-(A/D)-(30/35/40/50)-(PS)-(EM)-D1

2 Feet, 20 Watts, D1: Dimmable Input 100-277 VAC

Options: Non-Dim (A), Dimmable (D), 3000K, 3500K, 4000K, 5000K, Sensor, Emergency Battery Back-up (25W)

LTP-L445-(A/D)-(30/35/40/50)-(PS)-(EM)-D1

4 Feet, 45 Watts, D1: Dimmable Input 100-277 VAC

Options: Non-Dim (A), Dimmable (D), 3000K, 3500K, 4000K, 5000K, Sensor, Emergency Battery Back-up

LTP-L870-(A/D)-(30/35/40/50)-(PS)-(EM)-D1

8 Feet, 70 Watts, D1: Dimmable Input 100-277 VAC

Options: Non-Dim (A), Dimmable (D), 3000K, 3500K, 4000K, 5000K, Sensor, Emergency Battery Back-up

Included Accessories:

- LTP-LCTAB PG9 Connector
- LTP-LCOND 3' Metal conduit hose
- LTP-LCOND-D 3' Power wire for Dim option
- LTP-LCOND-A 3' Power wire for Non-Dim option



(PG 9 connector)



(Buckles)



(connector for seamless connection)

Available Accessories:

- LTP-LRC: Unit Remote Control
- LTP-LDLS Daylight Sensor
- LTP-LRC-DLS Daylight Sensor Remote Control
- LTP-HANG Hanging Kit
- LTP-LBKL Buckles
- LTP-LCVR Seam Cover for seamless connection
- LTP-LMDP-3 Emergency Battery Back-up (3 hr) - UL924



(Hanging Kits)



(Metal Hose)

● Build-in Microwave Sensor Instructions

--Microwave sensor, detecting area 5-10M.

-- Gent sensor can be set to A,B,C three working models by remote control



A: 100% full bright --- 20% bright (5% ~ 70% Optional)--- OFF

Remote Control



B: 100% full bright --- 20% bright (5% ~ 70% Optional)



C: 100% full bright --- OFF



Installation Modes

